



Location and Situational Awareness





Tracker IoT LLC

Software, Tracking and Security Technologies

Founded in 2005 and branded as Tracker IoT LLC in 2025

Rapidly configurable software for many industries and applications

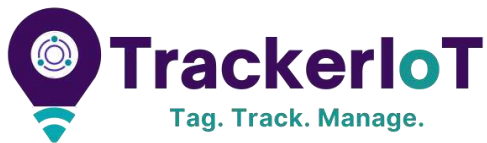
Support for barcoding, RFID, Bluetooth and GPS/GSM tracking technologies

Turn-key solutions, installation, training and ongoing support





Global Solutions Provider



Headquarters in USA with operations in India and Africa

Resellers in over fifty (50) countries





What we do

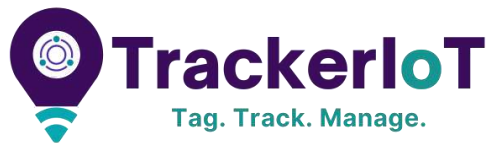
Tracking solutions for many industries and applications

Off-the-shelf, rapidly configurable software to customer requirements

Integration with best-of-breed, global hardware and tag manufacturers

Supports Barcode, UHF RFID, Bluetooth and GPS / GSM tracking technologies

Turn-key solution deployments and ongoing support



Technical Topology



SERVERS

DATABASE BACKUP APPLICATION TEST/DEV

- Available as on-premises solution
- Available as cloud-hosted solution
- LDAP/Active Directory Supported
- API Integration with back-end systems

NETWORK SWITCH



USER ADMIN TECHNICAL USER

PUBLIC STATIC IP FOR REMOTE ACCESS



USER VEHICLE USER USER USER

NETWORK SWITCH



Network reader and antennas for doorways and windows

Alarm/ Lights to prevent unauthorised movements

Videos cameras for visual security

Mobile scanners for Rapid Inventories

Industrial Sensors & measurement devices

USB PORT



USB RFID Barcode scanner for quick-scan Issue & Returns

Fingerprint scan to authenticate personnel

Electronic signature to validate custody turn-over

Digital scale to capture the weight of non-serialized parts

Digital camera to take photos of staff, objects and/or people receiving objects



Primary Applications





Weapon/gear/ammo tracking, accountability and security

- Authenticate personnel by ID card, PIN # or biometrics
- Track weapon, gear and ammo Issues and Returns with touchscreen, barcoding and RFID passive tracking
- Ensure weapon certification, arm-status, assigned weapons, and post-assignment are reconciled against personnel credentials and duty assignment
- Validate transfer-of-custody via biometrics, electronic signature or PIN #
- Armory Bluetooth real-time inventories, GSM/GPS global tracking and shots-fired monitoring





Documents, Files and Archives



- Records management program and filing system design and maintenance
- Records classification system and retention schedule design and maintenance
- File management software including barcode and RFID radio wave tracking technologies
- File security at file and archive rooms, throughout facilities and at building exits
- Inventory files-in-circulation with mobile scanner to know the locations of most-active files
- Find missing files and archives with mobile scanner using color, numbers and beeps



Office Assets



- Identify, register and tag all facility office assets from time of original receipt
- Manage asset assignments and transfer-of-custody from storage to person/place
- Support for software, barcode and RFID tracking / inventory / find technologies
- Complete chain-of-custody and asset history from acquisition through final disposition
- Manage warranties, maintenance agreements, insurance and other asset variables
- Depreciation calculations and real-time asset valuations



Industrial Assets



- Identify, register and tag all industrial assets from time of original receipt, and link asset QR codes to suppliers for product information and support
- Monitors asset calibrations, inspections and maintenance for compliance
- Support for software, barcode and RFID tracking, and mobile scanner checklists and functions
- Complete chain-of-custody and asset history from acquisition through final disposition
- Manage warranties, maintenance agreements, insurance and other asset variables
- Depreciation calculations and real-time asset valuations



Warehouse Item, Pallet and Bin Tracking



- Manage the receipt of components, goods, their locations and statuses
- Manage goods-in-process through the manufacture/assembly process including QC
- Manage and cycle-count non-serialized parts based on quantities and weights
- Track inventory with barcodes, UHF RFID and long-range, real-time tracking technologies
- Outfit exits with tracking and security to prevent unauthorized removals



Parts for Facility and Asset Maintenance

- Ensure that the parts required to run your facilities are on-hand when needed
- Prevent production stoppages and hampered operations
- Keep track of all parts from acquisition and monitor real-time against required quantity
- Track inventory with barcodes, UHF RFID and long-range, real-time tracking technologies
- Utilize USB, mobile and networked readers to track parts real-time



Industrial Tools for Facility and Asset Maintenance

- Register all tools in computerized electronic database with ID #'s
- Provide computer and/or kiosk(s) for keyboard/mouse/touch-screen check-in and check-out
- Implement RFIF antennas at tool crib entrance / exit(s) to passively track tool movements
- Mobile barcode/RFID scanners and tablets to inventory while in-circulation or in-storage
- Manage tool inspections, maintenance and readiness



Police Evidence and Seized Property

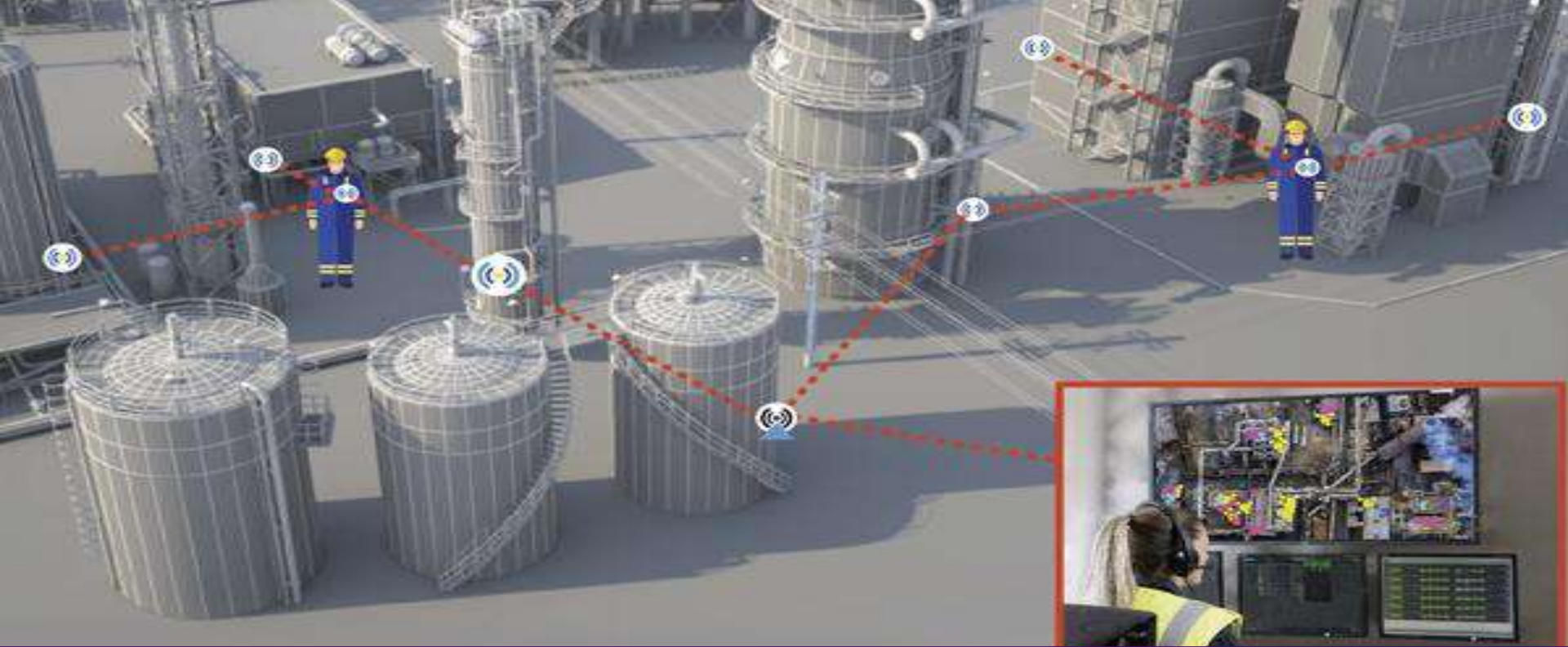
- Identify and register narcotics, currency, weapons, vehicles, property and other objects related to crime scenes
- Manage individual objects, containers and objects-in-containers/bins/bag
- Track property and evidence to specific storage locations
- Inventory objects-in-storage, objects-in-circulation, and, find needed 'missing' objects utilizing mobile scanner
- Enforce chain-of-custody with electronic signature pad, PIN pad or biometrics



Detainees and Officers in Detention Centers



- Utilize tamper-proof bracelets for prisoners and watch devices for officers to track movements and position of inmates and officers real-time
- Prisoner tags include biomedical sensors to measure heart rate, breathing/oxygen and blood pressure, to help ensure health safety.
- Alerts if inmates congregate in an unnatural pattern or if they breach a geo-fence zone



Personnel Tracking and Mustering

- Track personnel with GPS/GPS and with Bluetooth technologies
- Know the locations of all personnel at all times
- Geo-fencing that produces alert if personnel breach perimeters in unauthorized manner
- Produce 'muster reports' of all persons and their locations in case of emergency/disaster





Heavy Weaponry, Aircraft and Watercraft



- Identify and register all heavy weaponry in Tracker^{IoT} database
- Track equipment locations with RFID, long-range tracking and GSM/GPS technologies
- Enhance equipment utilization and deployments
- Monitor inspections, calibrations and maintenance
- Vehicles, tanks, artillery, missiles, torpedoes, drones, aircraft and watercraft



Fleets, Trucks and Containers

- Identify and register vehicles, truck cabs and truck/railway/air freight containers
- Track vehicle, truck cab and container locations with GSM/GPS technologies
- Provide security for containers to prevent door opening tampering
- Monitor inspections, calibrations and maintenance



Construction Equipment

- Identify and register all construction equipment in Tracker^{IoT} database
- Track equipment locations with GSM-GPS tracking technologies
- Enhance equipment utilization
- Monitor inspections, calibrations and maintenance
- Monitor maintenance agreements, insurance etc.



Integrated Electronic Document Management



- Digitize industrial documentation like specifications, repair manuals, insurance, maintenance agreements, warranties, shipping documents, insurance policies, tooling diagrams...
- Digitize personnel and procurement files, and accounting and financial files, and legal and vital records, and sales and marketing materials, or any type of document or file...
- Fully integrate electronic documents with physical records and documents related to with assets
- Reengineer business processes with eForms and workflow process automation



Technologies





1D / 2D barcodes and QR codes

- Tag objects and personnel with barcode labels for fast, accurate 'identification'
- Scan objects that are being placed into a container for parent-child software management
- Eliminate keyboard/mouse using USB barcode scanner for quick check-in and check-out
- Scan assets and materials with mobile scanner for inventories, placing into storage and removing from storage, including cycle counts



UHF ‘Ultra High Frequency’ RFID

- Tag objects, personnel and equipment with UHF RFID tags
- Place RFID antennas at strategic detection points for location-based identification and location updates, based on a detection distance of approximately 20’
- Utilize RFID mobile scanners to rapidly inventory objects in-storage and/or in-circulation
- Place RFID antennas and alarms/lights at exit points and/or at restricted areas to prevent unauthorized removals or movements



Bluetooth

- Tag objects, personnel and equipment with long-range tracking tags, indoors and outdoors
- Items and people that are not detected by GSM are detected by Bluetooth and/or WiFi
- Enhance asset and personnel utilization through better data and management capabilities
- Know the location of location status of all assets and personnel real-time



GSM and GPS

- Tracker IoT solutions ingests GSM and GPS data similarly to ingestion of barcode, UHF RFID or long-range tracking technology data
- Provides the enhanced capability to view locations as icons on GSM maps and GPS aerial photography
- Enables color-coding of icons based on statuses and workflows
- Eliminates the cost of physical tracking equipment, such as readers and gateways
- Tracking real-time, everywhere, all-the-time



Tracker IoT Software, Hardware and Labels



Tracker IoT Technology

Cloud or On-Premise, Open or Proprietary Software Platforms



State-of-the-Art, Best-of-Breed Technology Continually Updated for Long Term Performance

* Item Name/Unique ID Type Min 3 chars Records Per Page

Laptop 10001 - LP10001 25

From Date To Date

Get Data
Get Previous Data
Get Next Data

Date ↑↓	Name ↑↓	Unique ID ↑↓	Action ↑↓	Action Details ↑↓	Remarks ↑↓	Reason ↑↓	Action By User ↑↓
04-Nov-2024 21:22	Laptop 10001	LP10001	Check-In	Item/s checked out to John1 Doe - T10010 : Checked-In by Internal Personnel-John1 Doe-T10010, Verification Method=None			User Folder
04-Nov-2024 21:19	Laptop 10001	LP10001	Check-Out	Checkout to Internal Personnel-John1 Doe-T10010, Search Method Used=Manual-UniqueID			User Folder
04-Nov-2024 21:19	Laptop 10001	LP10001	Location Change	Current Location changed from NW Store to NW Store-Room1			User Folder
25-Sep-2024 13:20	Laptop 10001	LP10001	Location Change	Current Location changed from Main Store-Room1 to NW Store			User Folder

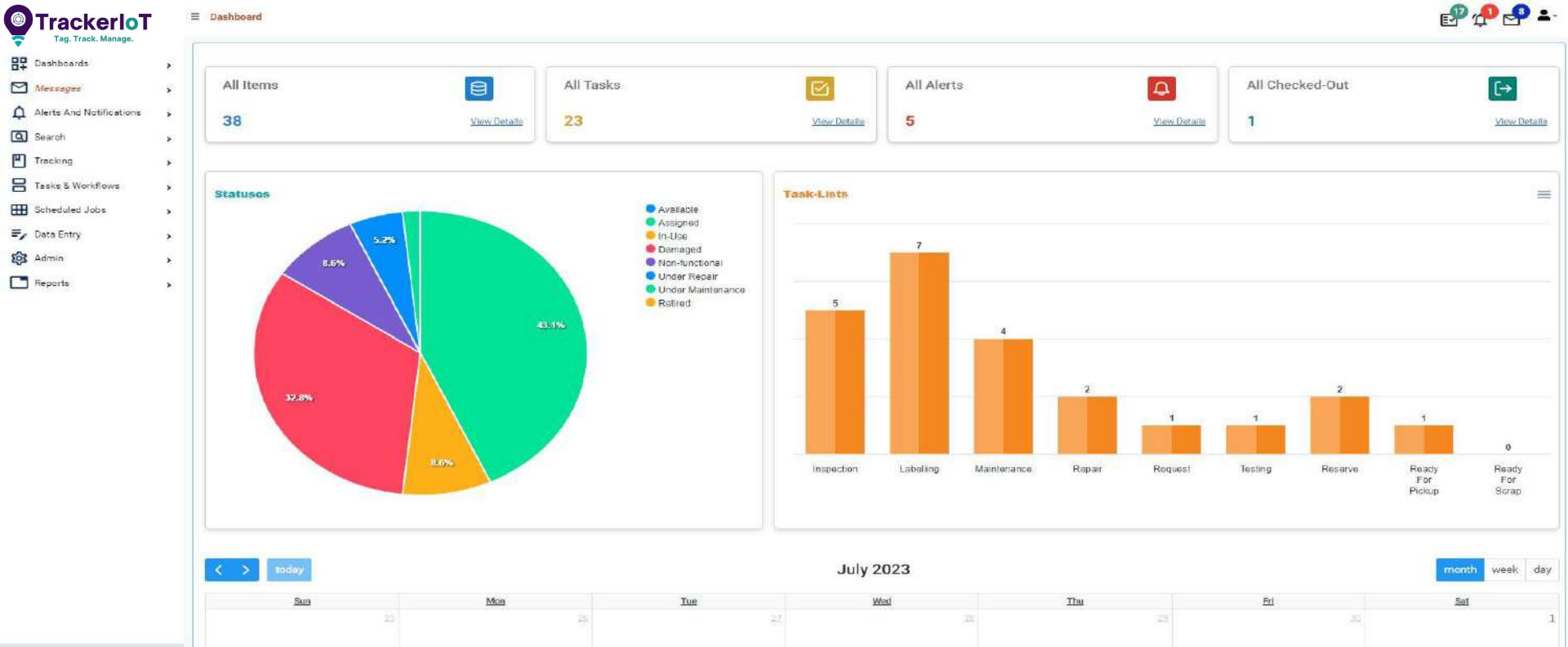
COTS (commercial-off-the-shelf) Software

- TrackerIoT software is fully developed and rapidly configurable and deployable for many industries and applications
- All features developed by Tracker IoT for customers iterates a single software code-base with all capabilities available out-of-the-box for each new customer
- Software features, tracking technologies and security technologies are configurable for each customer's exacting data, workflow, tracking, reporting and security requirements
- Includes API's and web services for synchronization with core processing and ERP systems



Items – Status – Location – Tasks – Workflow – History – Reports

- Easy-to-use Search features enable rapid access to data about all records in the database, including data, meta-data, location, status, tasks and history
- Reports can be printed or exported in .csv or .xls formats for information visibility and analytics
- Includes templates, which are specific software screens within the software, based on the item-types and the functions specifically required for each item-type
- Records/items can be reserved, requested or placed into any task list at any time



Items – Status – Location – Tasks – Workflow – History – Reports

- Graphical dashboards dynamically, real-time configured for each User and for comprehensive values against all templates, objects and people, tasks, workflow, locations, statuses etc.
- Includes calendar that depicts all User and/or comprehensive values for tasks, events and workflows, color-coded based on configurable values such as pending or overdue tasks
- Includes configurable, internal messaging and workflow monitoring system enabling personnel collaboration and dynamic teamwork
- Fully configurable graphs, charts and the data points that produce the graphics and numbers



Barcode, RFID, Bluetooth and Security Devices



- TrackerIoT software supports the use of computers, laptops, tablets and phones
- Integrates with barcode and RFID devices, including USB scanners, mobile scanners, networked scanners and printers, as well as Bluetooth antennas
- Integrates with security devices including fingerprint scanners, electronic signature pads and alarms
- Data captured by devices automatically updates TrackerIoT software, updates item locations, and creates chain-of-custody historical records for each transaction



Labels and Tags

Barcodes, RFID, Bluetooth and GPS/GSM



- A wide array of 1D, 2D and QR code barcode labels of varying sizes and materials
- Many varieties of low-cost RFID labels that can be placed on non-metal items
- Many varieties of RFID raised tags that are optimized for on-metal or near-metal
- Bluetooth tags for real-time tracking of people and items
- GPS/GSM tags to track people and items in outdoor areas, cities and globally



Professional Services





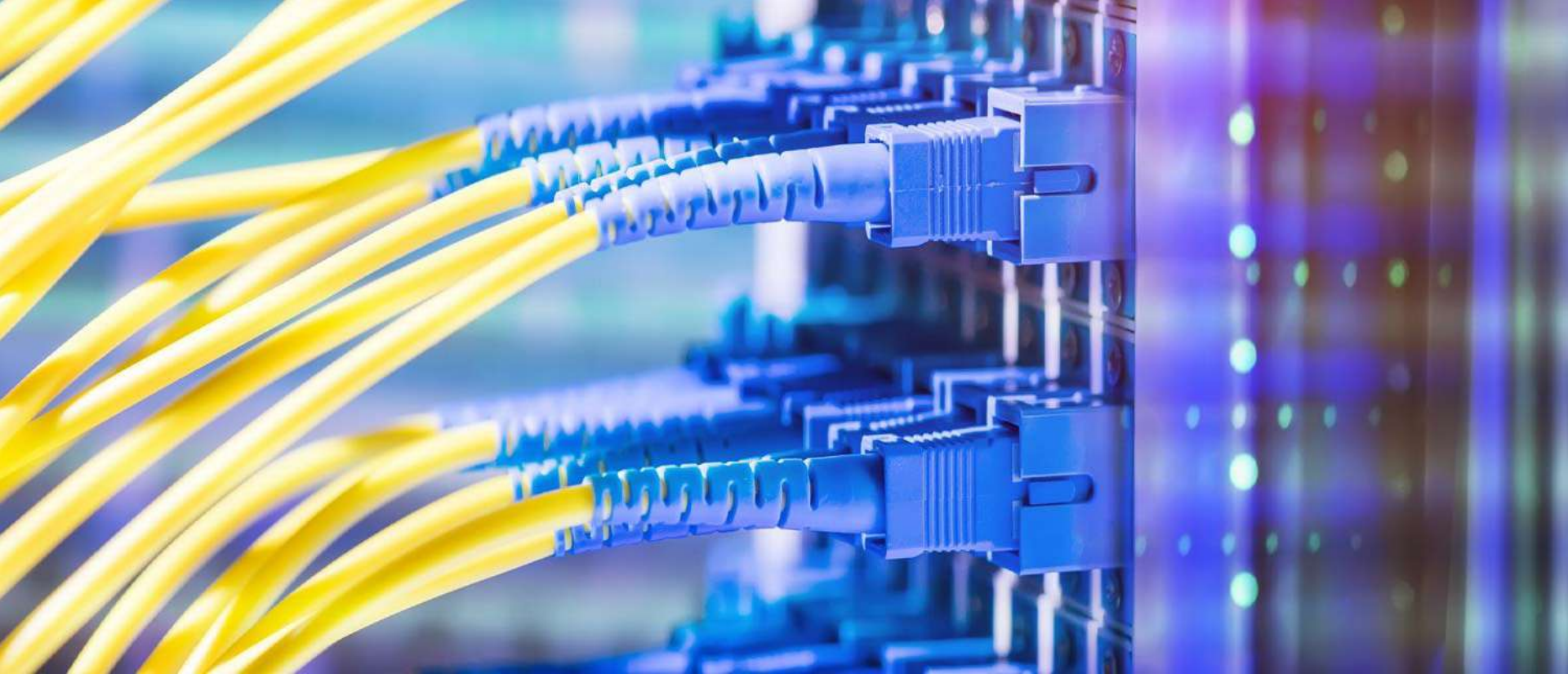
Requirements Analysis

- Establish project team and emphasize collaborative insights and creativity of team members
- Analyze current systems, technologies and workflows against desired outcomes
- Define project deliverables and scope-of-work to best fulfill exacting data, workflow, tracking, reporting and security requirements.
- Establish 'living' project plan and Gantt chart for managing project execution



Project Management

- Trackable™ staff includes seasoned project management professionals fully vetted through prior, successful projects, anecdotally validating reliability and realization of expected results
- From project kick-off meeting and subsequent customer/vendor collaboration meetings, throughout project execution, all tasks and responsibilities are assigned and monitored to produce optimal fulfillment
- Precise project management during deployment and initial stages of solution usage



Turn-Key Implementations and Training

- Turn-key onsite implementations
- Lab testing of system and equipment prior to deployment to ensure proper performance
- Hardware installation, performance testing and deployment
- Software installation, User training and Technical staff training
- 'Hot' system support and solution iteration during deployment testing phase





Ongoing Support, Updates and Advancements

- Tracker IoT provides worldwide support through web-meetings, conference calls, emails and text, and including onsite visits when required
- Tracker IoT solutions are also locally supported by Tracker IoT local distributors for local support
- Support includes all software, users, technical staff, and, hardware repair-or-replace guarantee
- Includes periodic server stack and application software updates to keep your system up-to-date





Tracker IoT

1680 Fruitville Road, Suite 512
Sarasota, FL 34236

eric@trackeriot.com

info@trackeriot.com

www.trackeriot.com

www.filetrackingiot.com

www.weapontrackeriot.com

+1 941-375-9437